

**DO**

a wi  
a deer




**LP**

di?li  
a skunk



**VW**

do'ya  
a beaver




**RC**

e:tli  
a mink




**YS**

gi ga  
a gopher



**YC**

gi tli  
a dog




**AS**

ko:g'  
a crow



**EP**

gv he  
a bobcat



**EP**

gv li  
a raccoon



**Eh**

gv ni  
a turkey




**UU**

sa:sa  
a goose



**BT**

si qua  
a hog or pig



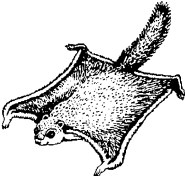
**FP**

su li:  
a buzzard



**TG**

te wa  
a flying squirrel



**JO**

ti:na'  
a louse



**ᑭᑭ**

tla ga  
a blue jay



**ᑕᑕ**

to si  
a mosquito



**ᑭᑭ**

tsi ya  
an otter



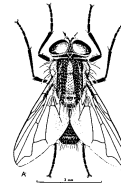
**ᑭᑕ**

tsu la  
a fox



**ᑭᑕ**

tv gi  
a fly



**ᑭᑕ**

wa ka  
a cow



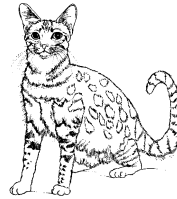
**ᑭᑕ**

wa ya  
a wolf



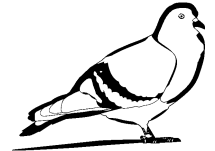
**ᑭᑕ**

we si  
a cat



**ᑭᑕ**

wo yi  
a pigeon



**ᑭᑕ**

yo na  
a bear

