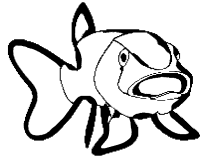


ᠳᠠᠰᠠ

a tsa di
fish



ᠳᠠᠯᠠ

da la la
woodpecker



ᠳᠠᠮᠠᠭᠠ

da ma ga
horse fly



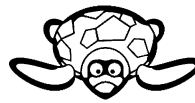
ᠳᠠᠨᠤ

dla nu si
leach



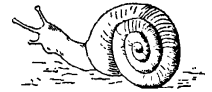
ᠳᠠᠭᠤ

dv g' si
turtle



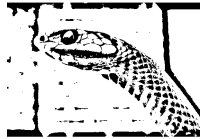
ᠳᠠᠯᠠ

e la qua
snail



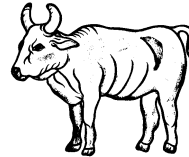
ᠳᠠᠭᠢ

ga le gi
black snake



ᠳᠠᠨᠠ

ga na li
ox



ᠳᠠᠮᠢ

ge mi li
camel



ᠳᠠᠭᠤ

gi yu ga
ground squirrel



ᠳᠠᠨᠠ

i na dv
snake



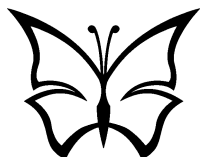
ᠳᠠᠨᠠ

i no li
badger



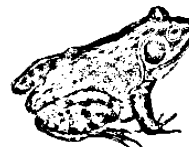
ᠳᠠᠮᠠ

ka ma ma
butterfly



ᠳᠠᠨᠠ

ka nu na
bull frog



ᠳᠠᠨᠠ

ka wo nu
duck



U᠖᠙

sa lo li
squirrel



4᠑h

se mo ni
salmon



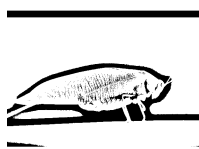
᠎ᠠᠰᠢ

s go yi
bug



ᠪᠢᠢ

si gi gi
katydid



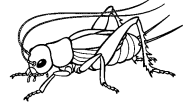
ᠰᠣᠷᠰ

so qui li
horse



WWS

ta la du
cricket



W᠙᠘

ta wo da
hawk



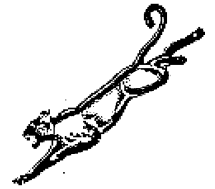
᠕ᠣᠠ

tle me ha
bat



ᠯᠢh

tlv da tsi
great cat



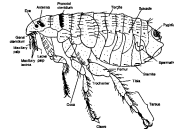
Vᠢ᠖

to tsu wa
red bird



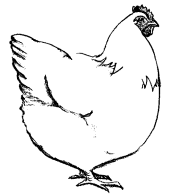
᠖᠙ᠰ

tso su ga
flea



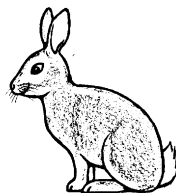
᠖WS

tso ta ga
chicken



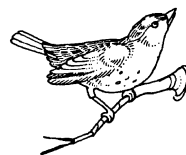
ᠬᠠᠳᠰ

tsi s du
rabbit



ᠬᠠᠲ

tsi s qua
bird



ᠵ᠙ᠬ

tsu we tsi
eggs



OJJ

u gu gu
owl



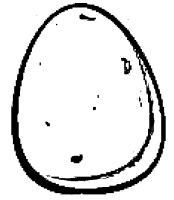
Oli

u tla v
mole



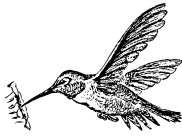
OWh

u we tsi
egg



GW

wa le la
humming bird



GGB

wa lo si
frog or toad



W4

ya n' se
buffalo

